

Grade 7 Math – Section 1.6

Name: _____

1. Admission to the Carnival is \$4. Each game played costs an additional \$2.

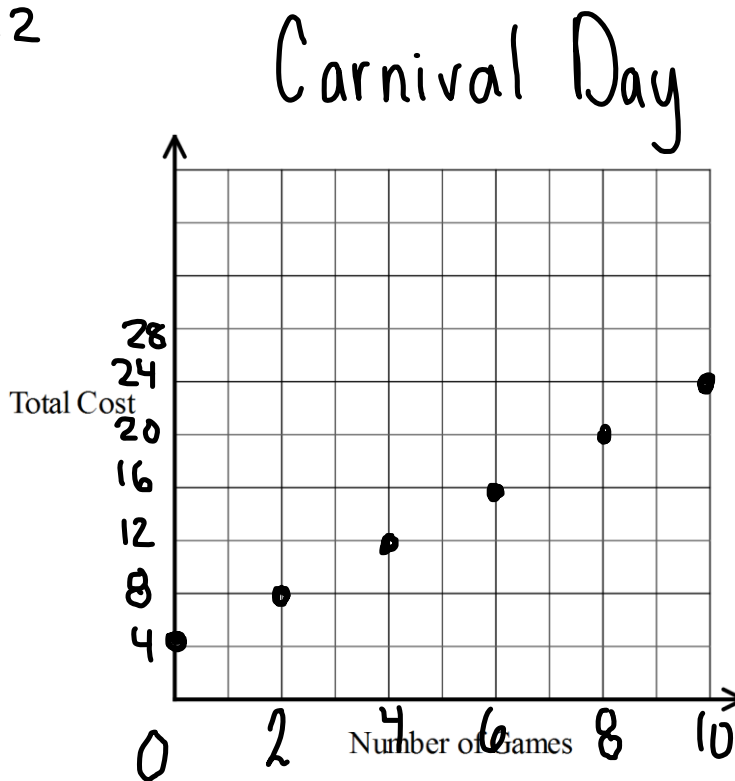
- a) Write a relation to show how the total cost is related to the number of games played.

$$4 + 2n \text{ or } 2n + 4$$

- b) Create a table of values to show the total cost if you play 0, 2, 4, 6, 8, or 10 games.

# of games	Total Cost
0	$4 + 2(0) = 4$
2	$4 + 2(2) = 8$
4	$4 + 2(4) = 12$
6	$4 + 2(6) = 16$
8	$4 + 2(8) = 20$
10	$4 + 2(10) = 24$

- c) Graph the relation.



- d) Use the graph to answer these questions:

- i) How much would it cost to play 5 games?

\$14 for 5 games.

- ii) How many games could you play for \$26?

11 games

$$\begin{array}{r} 26 \\ - 4 \\ \hline 22 \end{array}$$

22 left for games

$$22 \div 2 = 11 \text{ games.}$$